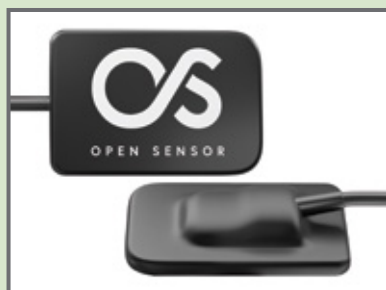




Products Rated Highly by Evaluators in CR Clinical Trials

Open Sensor

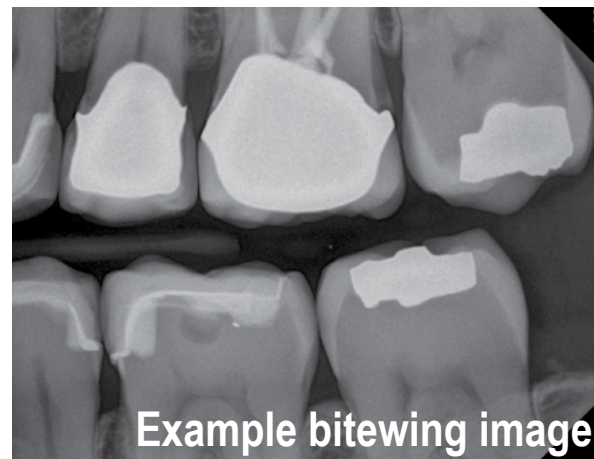


DentiMax

\$2,499–\$2,999/Sensor

First Look: Intraoral X-ray Sensor with Lower Cost and Excellent Image Quality

DentiMax’s sensors exhibited excellent resolution, sensitivity, image quality, and exposure latitude in controlled comparisons with other leading sensor brands. CMOS sensors feature a scintillation layer bonded directly to the imager, eliminating the fiber optic face plate and making the sensors less than 5 mm thick. Available in size 1 and 2 with USB connectors. Software was simple and easy to learn. Limitations included size and rigidity of sensors similar to other hard CMOS sensors. Long-term clinical performance is being established, and DentiMax reports more than 50,000 x-ray sensors in use internationally.



Example bitewing image

CR CONCLUSIONS: CMOS intraoral x-ray sensor exhibited excellent image quality and resolution with a lower price than many leading brands.

What is CR?

WHY CR?

CR was founded in 1976 by clinicians who believed practitioners could confirm efficacy and clinical usefulness of new products and avoid both the experimentation on patients and failures in the closet. With this purpose in mind, CR was organized as a unique volunteer purpose of testing all types of dental products and disseminating results to colleagues throughout the world.

WHO FUNDS CR?

Research funds come from subscriptions to the Gordon J. Christensen Clinicians Report®. Revenue from CR's "Dentistry Update™" courses support payroll for non-clinical staff. All Clinical Evaluators volunteer their time and expertise. CR is a non-profit, educational research institute. It is not owned in whole or in part by any individual, family, or group of investors. This system, free of outside funding, was designed to keep CR's research objective and candid.

HOW DOES CR FUNCTION?

Each year, CR tests in excess of 750 different product brands, performing about 20,000 field evaluations. CR tests all types of dental products, including materials, devices, and equipment, plus techniques. Worldwide, products are purchased from distributors, secured from companies, and sent to CR by clinicians, inventors, and patients. There is no charge to companies for product evaluations. Testing combines the efforts of 450 clinicians in 19 countries who volunteer their time and expertise, and 40 on-site scientists, engineers, and support staff. Products are subjected to at least two levels of CR's unique three-tiered evaluation process that consists of:

1. Clinical field trials where new products are incorporated into routine use in a variety of dental practices and compared by clinicians to products and methods they use routinely.
2. Controlled clinical tests where new products are used and compared under rigorously controlled conditions, and patients are paid for their time as study participants.
3. Laboratory tests where physical and chemical properties of new products are compared to standard products.

Clinical Success is the Final Test



Clinicians Report® a Publication of CR Foundation®

3707 N Canyon Road, Building 7, Provo UT 84604

Phone: 801-226-2121 • Fax: 801-226-4726

CR@CliniciansReport.org • www.CliniciansReport.org

CRA Foundation® changed its name to CR Foundation® in 2008.



This team is testing resin curing lights to determine their ability to cure a variety of resin-based composites.

Every month several new projects are completed.

THE PROBLEM WITH NEW DENTAL PRODUCTS.

New dental products have always presented a challenge to clinicians because, with little more than promotional information to guide them, they must judge between those that are new and better, and those that are just new. Because of the industry's keen competition and rush to be first on the market, clinicians and their patients often become test data for new products.

Every clinician has, at one time or another, become a victim of this system. All own new products that did not meet expectations, but are stored in hope of some unknown future use, or thrown away at a considerable loss. To help clinicians make educated product purchases, CR tests new dental products and reports the results to the profession.

Products evaluated by CR Foundation® (CR®) and reported in the *Gordon J. Christensen Clinicians Report®* have been selected on the basis of merit from hundreds of products under evaluation. CR® conducts research at three levels: 1) multiple-user field evaluations, 2) controlled long-term clinical research, and 3) basic science laboratory research. Over 400 clinical field evaluators are located throughout the world and 40 full-time employees work at the institute. A product must meet at least one of the following standards to be reported in this publication: 1) innovative and new on the market, 2) less expensive, but meets the use standards, 3) unrecognized, valuable classic, or 4) superior to others in its broad classification. Your results may differ from CR Evaluators or other researchers on any product because of differences in preferences, techniques, product batches, or environments. CR Foundation® is a tax-exempt, non-profit education and research organization which uses a unique volunteer structure to produce objective, factual data. All proceeds are used to support the work of CR Foundation®. ©2022 This report or portions thereof may not be duplicated without permission of CR Foundation®. Annual English language subscription: US\$229 worldwide, plus GST Canada subscriptions. Single issue: \$29 each. See www.CliniciansReport.org for additional subscription information.